



L'ASSOCIATION CANADIENNE DES
Sciences Humaines en Santé

CANADIAN ASSOCIATION FOR
Health Humanities

Creating Space 14
May 3-5, 2024

Tupper Medical Building, Dalhousie University
5850 College St, Halifax, NS B3H 4H7

Re-Imagining Belonging and Kindness

Réimaginer L'appartenance et La Bienveillance

Conference Schedule



CREATIVE SPACES

Book Table

Art Installation

Painting as a reflection on spiritual care: A research-creation project

Jennifer Hamilton

Poster Display

Unbuilding mental health medical mistrust narratives in Canada's Black youth

Esther-Joelle Asare

When is "I'm Sorry" not enough?: An exploration of breaking bad news in a simulated clinical setting

Bailey Shubert, T. Lynne Barone, Samantha K. Ammons, Pamela Dickey, Shaun Horak

Expanding the gender unicorn to create an education intervention for cancer care providers

Emily Taylor, Erin Walker, Samantha Scime, Margo Kennedy, Christian Schulz-Quach, Jennifer Croke

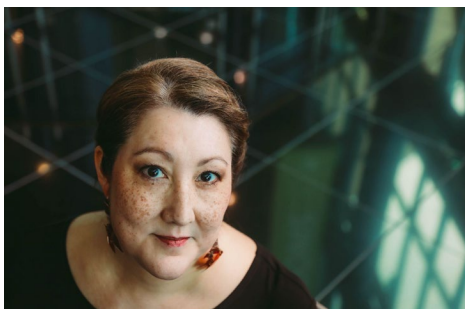
Process-realist evaluation of an arts-based program intervention in an acute care hospital setting: An action learning approach

Jennie Vegt, Esther Fujiwara, Pamela Mathura, & Pamela Brett-MacLean



Plenary Speakers

Deantha Edmunds



Deantha Edmunds is Canada's first Inuk professional classical singer. She was appointed a Member of the Order of Canada in December 2023 for her activity as a performer, writer, composer, and mentor – work which seeks to empower Indigenous people and share their stories. Her work has international reverberation as well as community integrity. She brings a level of professional excellence to Canada's Indigenous art scene that is unique and important.

Notable appearances include singing at the opening ceremony of the Frankfurt Book Fair in 2021, performing for His Holiness, Pope Francis in Iqaluit at the official apology to Inuit residential school survivors in 2022, and singing the Nunatsiavut anthem for King Charles III at the St. John's welcome ceremony of the 2022 Canadian Royal Tour which focused on Reconciliation.

Creating original music, collaborating with other musicians, contributing to Indigenous productions, and mentoring young artists, Deantha shares her voice and vision with her whole heart, and is drawing accolades from across Canada and the world.

Kathleen Watt

Kathleen Watt sang principal roles with Boston Lyric Opera, Utah Opera Company, Springfield Regional Opera, and others, and in the Extra Chorus of New York's Metropolitan Opera, before her singing career was summarily ended by osteogenic sarcoma (bone cancer) in her face. Since retiring from performing, Kathleen has written frequently on performing arts and cultural issues, including features, profiles, and essays. As a writer and cancer survivor she has collaborated with doctors and artists on a range of projects, including an appearance on a BBC-4 series about facial disfigurement.

Her book *Rearranged* tells the story of coming face to face with mortality, disfigurement, the meaning and use of beauty. It is a tale of letting go to hold on, of putting old pieces to new uses, and of the unlikely arrangements that make it all work out. The book captures the importance of including patients in treatment decisions, and suggests that, when met with courage and resilience, a harrowing medical journey can result in a fully engaged life of wellness and plenty.





Time (ADT)	FRIDAY, MAY 3, 2024
2:30 - 3:45 pm	<p>Welcome and Opening Remarks</p> <p>Opening Plenary: Kathleen Watt <i>“Word and Music: What We Say; How We Say It”</i></p> <p>THEATRE B AND VIRTUAL</p>
3:45 - 4:00 pm	Transition
4:00 - 5:00 pm	Parallel Sessions – Research Presentations (varied formats)
	<p>Session A: THROUGH DIFFERENT LENSES (onsite) THEATRE B Moderator: Shane Neilson</p>
	<p>Painting as a reflection on spiritual care : A research-creation project <i>Jennifer Hamilton</i></p>
	<p>Artists on the wards: Explorations in documenting artists’ encounters with patients <i>Jennie Vegt, Shirley Serviss, Esther Fujimura, Pamela Mathura, Pamela Brett-MacLean</i></p>
	<p>Let’s get critical: The ‘scholarship’ competency, CanMEDS, the 2025 emerging concepts of physician humanism, and research with medical students who reviewed health humanities initiatives from around the world <i>Sarah de Leeuw, Darian Goldin Stahl</i></p>
	<p>Session B: CONNECTIONS THROUGH THE HUMANITIES (hybrid) JOIN FROM ROOM G-36 OR VIRTUAL WITH LINK Moderator: Graham McCaffrey</p>
	<p>Digital storytelling: The logic of Indigenous medicine stories <i>Darrel Manitowabi</i></p>
	<p>Reimagining home: A health humanities approach to palliative care for the homeless amidst a mental health crisis <i>Randip Kaur Dhalival</i></p>



	Creating and opening up “sensibilities” and sensorial capacity through SF methodology (speculative fiction/fabulation, science fiction/fabulation): Theoretical exploration and practical applications <i>Émilie Dionne</i>
5:00 - 5:15 pm	Transition
5:15 - 6:15 pm	Parallel Sessions – Workshops (onsite)
	Session A THEATRE A
	Re-KIND-ling care: An experiential workshop in techniques for self-care <i>Gerri Frager</i>
	Session B ROOM G-36
	The ethics of empathy in the 21st Century <i>Tracy Moniz, Amanda Cooper, Mary Lynn E. Felice, Jodi Jarecke, Carolyn M. Melro, Paul Haidet</i>
	Session C THEATRE C
	Metaphor as medicine: How figurative language builds bridges in healthcare <i>Maya J. Sorini</i>
	Session D THEATRE B
Behind the lens of empathy: A patient-centric filmmaking workshop <i>Olivia (Autumn) Rennie</i>	



Time (ADT)	SATURDAY, MAY 4, 2024
9:00 - 10:00 am	Parallel Sessions – Workshops (onsite or virtual)
	Onsite Workshops
	Session A THEATRE C
	Indigenous lens photovoice <i>Lisa Boivin</i>
	Session B ROOM L3 TUPPER LINK 2ND FLOOR
	Dry, moist and juicy: The libretto as an analogy for life <i>Wendy A. Stewart, Kathleen Watt</i>
	Session C ROOM L7 TUPPER LINK 2ND FLOOR
	Pathology in painting <i>Stef Owen</i>
	Session D – Virtual Workshops JOIN VIRTUALLY WITH LINK
	From classmates to colleagues: Building support networks to prevent burnout and foster resilience <i>Hannah Feiner</i>
Trisha: Otherness, biculturalism, and belonging <i>Priyanka Subash, Harini Sridhar</i>	
10:00 - 10:30 am	Break Poster Session Tupper Building Link (snacks and refreshments provided)



	Parallel Sessions – Research Presentations (onsite or virtual)
	Session A (onsite): CLINICAL SPACES ROOM L3 TUPPER LINK 2ND FLOOR Moderator: Benjamin Gagnon-Chaine
	What the doctor said: Vitality in the clinical encounter <i>Leonard Bloom</i>
	Examining the role of ‘textual communities’ in healthcare <i>Paula Leverage</i>
	More than the sum of their charts: A documentary theatre research creation proposal on patient experience and contested medical authorship in the Canadian health care system <i>William MacGregor</i>
	Session B (onsite): SHIFTING PERSPECTIVES THEATRE C Moderator: Sarah de Leeuw
	“I smoked Meth with my doctor”: Kenosis and the problem of moral ambiguity in person-centered medicine <i>Adam Bedford</i>
	H.E.A.L. healthcare: An introduction to the <u>H</u> earts-Based <u>E</u> ducation and <u>A</u> nti-Colonial <u>L</u> earning Project <i>Nicole Halbauer, Michelle Roberge, Sarah de Leeuw, Lisa Striegler</i>
	(Bedside) manners, memoir, and marginalization <i>Robin McCrary</i>
	Session C (virtual): NARRATIVES THROUGH WORDS AND VISUAL ART JOIN FROM ROOM G-36 OR VIRTUAL WITH LINK Moderator: Graham McCaffrey
	Discursive constructions of trans and non-binary patients by non-medical healthcare providers in Ontario <i>Jamie Takaoka</i>
	Mental illness as seen through literature <i>Ashaka Patel, Lotus Alphonsus, Julija Kelecevic</i>
	Belonging to a team: Reflections on the benefits of visual thinking strategies with an interdisciplinary healthcare team <i>Andrea Gumpert, Jessica Remedios</i>
10:30 - 11:30 am	
11:30 am - 12:00 pm	Transition (Get lunch and bring it to the AGM. The AGM begins promptly at noon.)



<p>12:00 - 1:00 pm</p>	<p style="text-align: center;">LUNCH</p> <p style="text-align: center;">Annual General Meeting, Canadian Association for Health Humanities</p> <p style="text-align: center;">THEATRE B and VIRTUAL</p>
<p>1:00 - 1:15 pm</p>	<p style="text-align: center;">Transition</p>
<p>1:15 - 2:45 pm</p>	<p style="text-align: center;">Parallel Sessions (varied formats)</p>
	<p style="text-align: center;">Session A – Research Presentation and Innovative Experiences in Health Humanities (onsite) ROOM THEATRE C Moderator: Graham McCaffrey</p>
	<p>Instilling criticality in medical education through a scholarly health humanities seminar series (research presentation) <i>Shane Neilson</i></p>
	<p>Resident reflections on co-founding and facilitating a reflective writing program for patients with cancer <i>Divya Santhanam, Subaima Tunio, Nick Maizlin</i></p>
	<p>Radio, research and resident education <i>Arundhati Dhara, Sarah Fraser</i></p>
	<p style="text-align: center;">Session B – Innovative Experiences in Health Humanities and Performance (onsite) ROOM THEATRE B Moderator: Benjamin Gagnon-Chaine</p>
	<p>If these walls could talk <i>Jonathan Zeyl</i></p> <p>The art of science: Using music to represent the cellular, cortical, and patient-level manifestations of dementia (performance) <i>Shreya Jha</i></p>



	Session C – Innovative Experiences in Health Humanities (virtual) JOIN FROM ROOM G-36 OR VIRTUAL WITH LINK Moderator: Tom Rosenal
	Using literature to re-imagine belonging and kindness <i>Jan Marta</i>
	UVic Bounce: How a humanities-based university initiative is building more compassionate and connected campus communities <i>Rebecca Gagan, Rae Dawson</i>
	Capacity, collaboration, connection: Multimodal supports for ECRs in health humanities and the arts <i>Suzie Berkhout, Katey Warran, Laura Wright, Saoirse Finn</i>
	Session D – Performance and Pecha Kucha (hybrid) ROOM THEATRE A OR VIRTUAL WITH LINK Moderator: Wendy Stewart
	Journeys end, journeys begin: Clinicians and families grieving together (performance) <i>Alison Hartman, Shapir Rosenberg</i>
	Exploring professional identity formation in psychiatry training through graphic medicine <i>Corinne Boudreau, Jonathan Gregory</i>
	Seeing eye-to-eye: Visualizing a better understanding of adult spinal deformities and patient decision aids <i>Valerie C. Cates</i>
	Public art as health care <i>Kim Morgan</i>
	The third space humanities chapbook <i>Abigale MacLellan</i>
	The case for the humanities in health professions education <i>Wendy A. Stewart</i>
2:45 - 3:00 pm	Transition



<p>3:00 - 4:30 pm</p>	<p>Plenary TJ Murray Visiting Scholar “An Inuk in Tune: Multidisciplinary Artist, Deantha Edmunds, C.M.” THEATRE A and VIRTUAL</p>
<p>4:30 - 6:00 pm</p>	<p>DR. GW ARCHIBALD GOLD HEADED CANE AWARD IN THE HUMANITIES AT DALHOUSIE UNIVERSITY and the CYNTHIA DAVIS WRITING AWARDS Followed by a reception THEATRE A and TUPPER LINK</p>



Time (ADT)	SUNDAY, MAY 5, 2024
9:30 - 10:30 am	Parallel Sessions (Workshops – onsite or virtual)
	Session A – Onsite Workshop ROOM L3 TUPPER LINK 2ND FLOOR
	In spring: Landscaping eco-emotions through art <i>Grace Henri</i>
	Session B – Onsite Workshop ROOM L7 TUPPER LINK 2ND FLOOR
	Conversations that build belonging: Learning the art of generous listening through podcasting <i>Emily R. Blyth, Coco Nielsen, Emilia Nielsen</i>
	Session C – Virtual Workshop JOIN WITH LINK
10:30 - 11:00 am	Break Tupper Building Link (snacks and refreshments provided)
	11:00 am - 12:00 pm
Session A: INQUIRY AND INEQUITY ROOM L7 TUPPER LINK 2ND FLOOR Moderator: Shane Neilson	
Writing to learn, writing to heal: Writing as an art of care <i>Wendy Shilton</i>	
Diversifying medical education while addressing health inequity through the lens of the humanities: A novel partnership between Oxford Medical School and underserved communities <i>Gina Hadley, Sally Frampton, Jim Harris, Ruth Wilson, Joshua Hordern, Erica Charters, Gabriele C. DeLuca</i>	



	Session B : EXPLORING THE PATIENT PERSPECTIVE THROUGH DIFFERENT MEDIA ROOM L3 TUPPER LINK 2ND FLOOR Moderator: Tom Rosenal
	An axiomatics of the self: Interstitial relationality for patient-centered care <i>Tinu Ruparell</i>
	Singing otherwise: Humanity in the aging voice <i>Colleen Renihan, Julia Brook, Wynnypaul Varela</i>
	Tattoo Stories <i>Alan Blum</i>
	Parallel Sessions – Panels
	Session A – Onsite Panel THEATRE A
	Sensitivity, emotions, and relationality: Care’s potential to mend within broken systems <i>Christina Doonan, Bethany Brenton, Maureen Levangie</i>
	Session B – Virtual Panel JOIN FROM ROOM G36 OR VIRTUAL WITH LINK
	Storytelling in palliative care: From research and co-creation to artistic modes of knowledge translation <i>Jessica Roy, Sarina Isenberg, Carol Wiebe, Jenny McMaster, Kaitlyn Boese, Kim Kilpatrick, Rachel Gray, Shirley Bush, Jaya Rastogi, Regine Krechowicz, Cory Ingram</i>
12:00 - 12:15 pm	Transition
12:15 - 12:30 pm	The Peterkin Brett-MacLean Student Prize Closing Remarks THEATRE A AND VIRTUAL